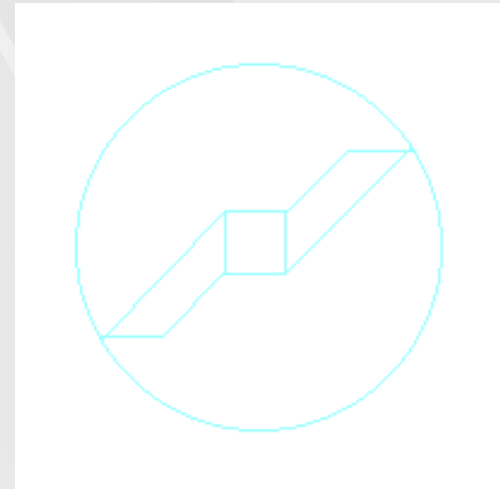


ICAB

Finite Element Analysis

- Steel design examples
 - buildings, travelling cranes
 - tank, conveyor, furnace
 - elevator
 - moveable bridge, lock
 - Radar tower
 - Pylons



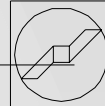
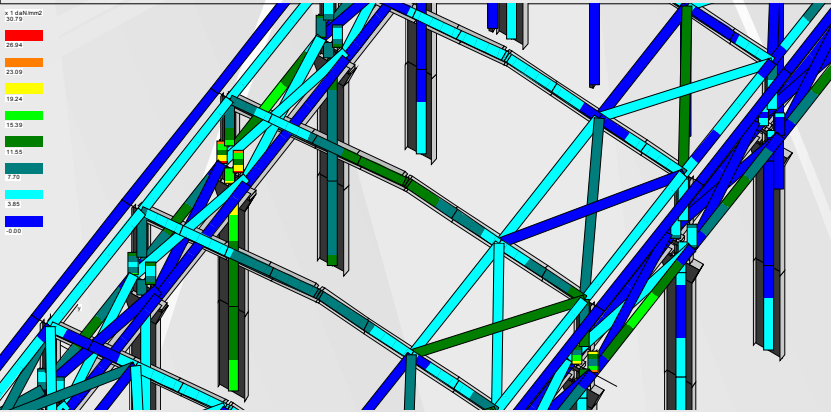


Steel building

● occupational, wind, snow, seismic loads



AJPGI bâtiment pour court bois E1 - FF - UPG304
Arrière-pensée 0124 4481000-0100
1/25/2,5 Dim. caractéristique de classe (poutre) Ø 30 78 daN/m²



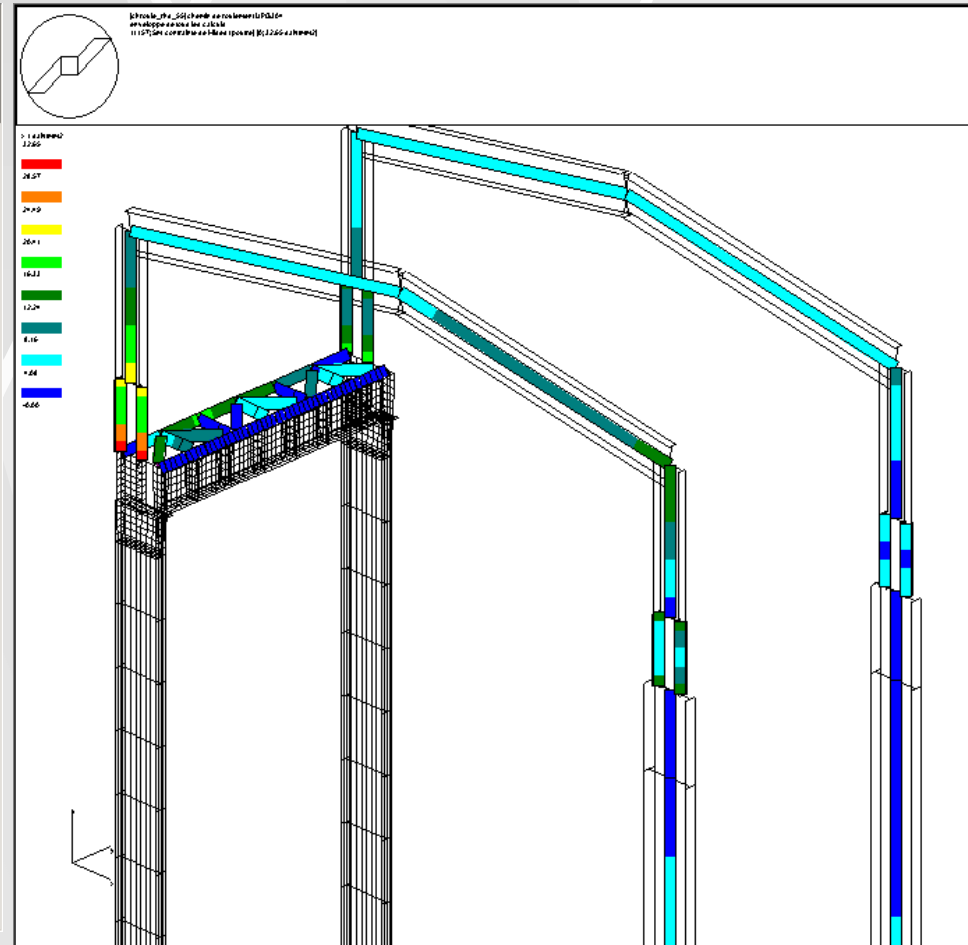
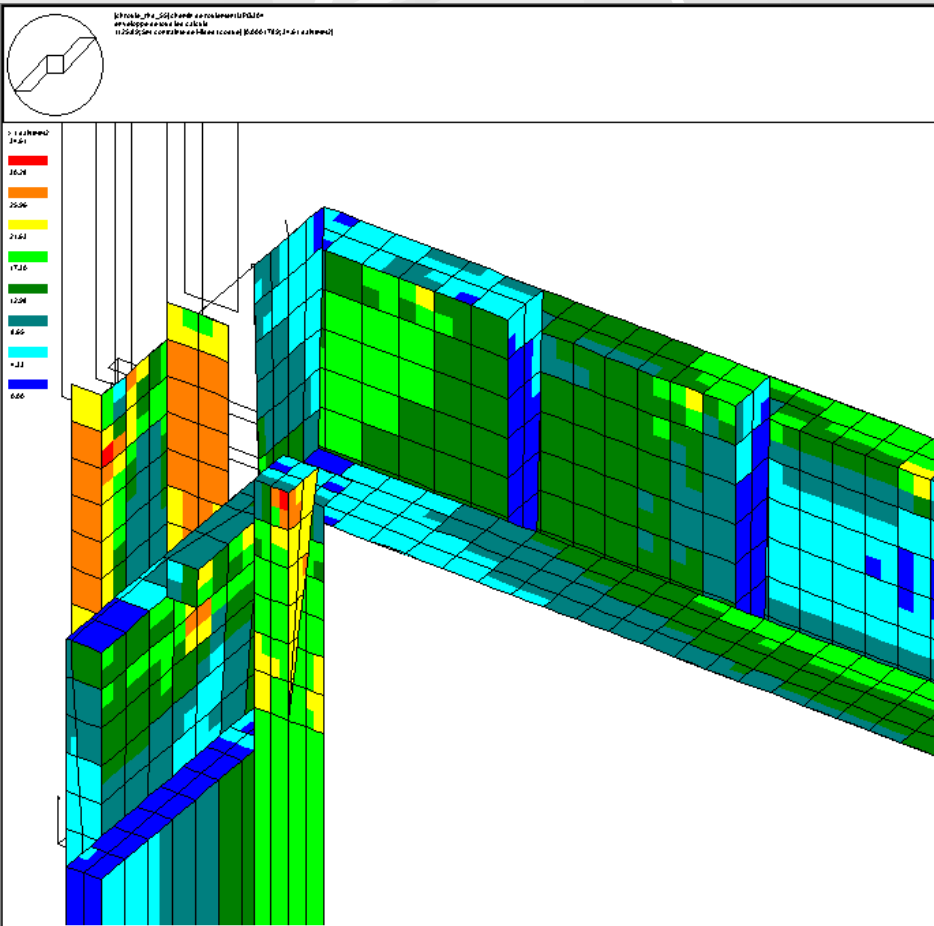
UPGI
1/25/2,5





Travelling crane support

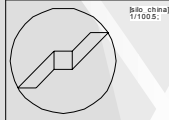
● Detailed model





Tanks, silos

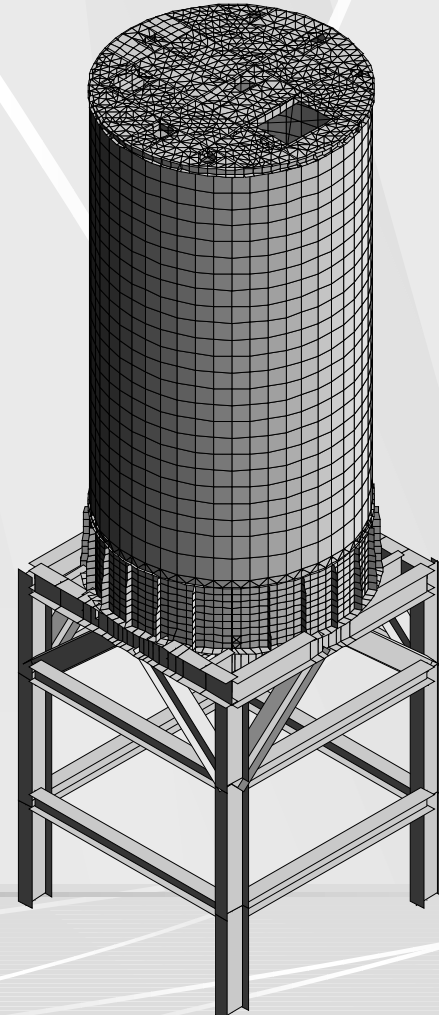
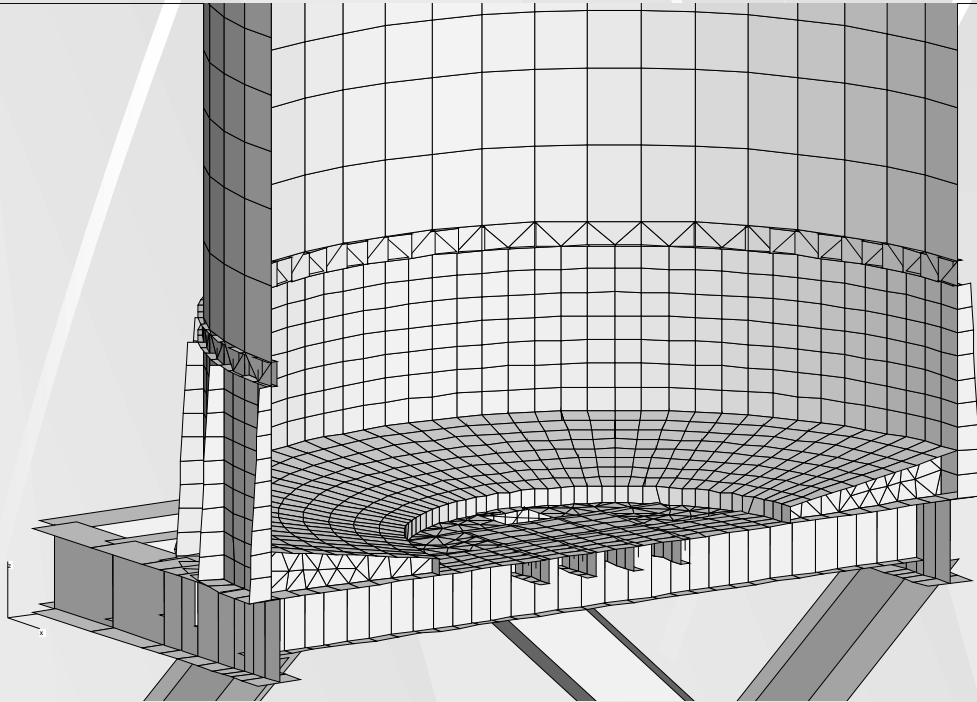
● Powder or hydraulic load



[Silv_china]
1/100.0



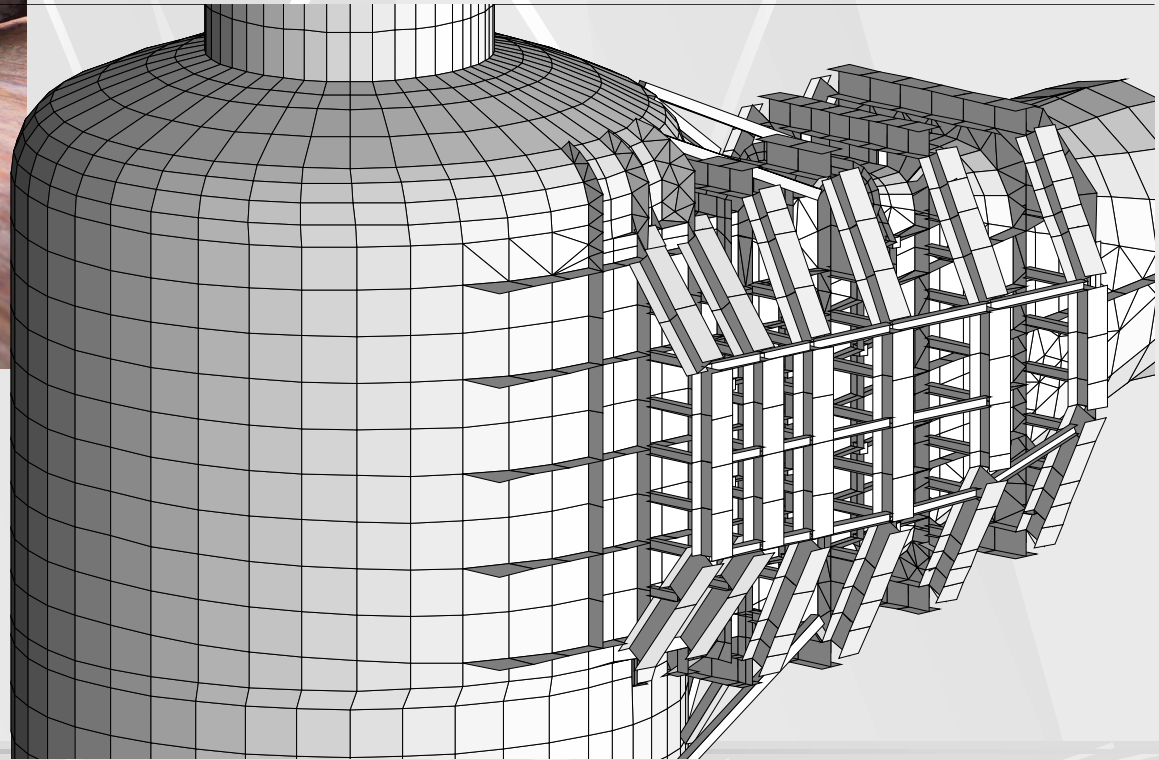
[Silv_china]
1/33.33





Expertise and reinforcement Furnace exhaust

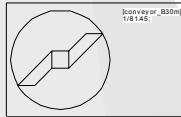
- Hot air under pressure





Conveyor

● Conveyor belt with supports



[conveyor_belt]
113142



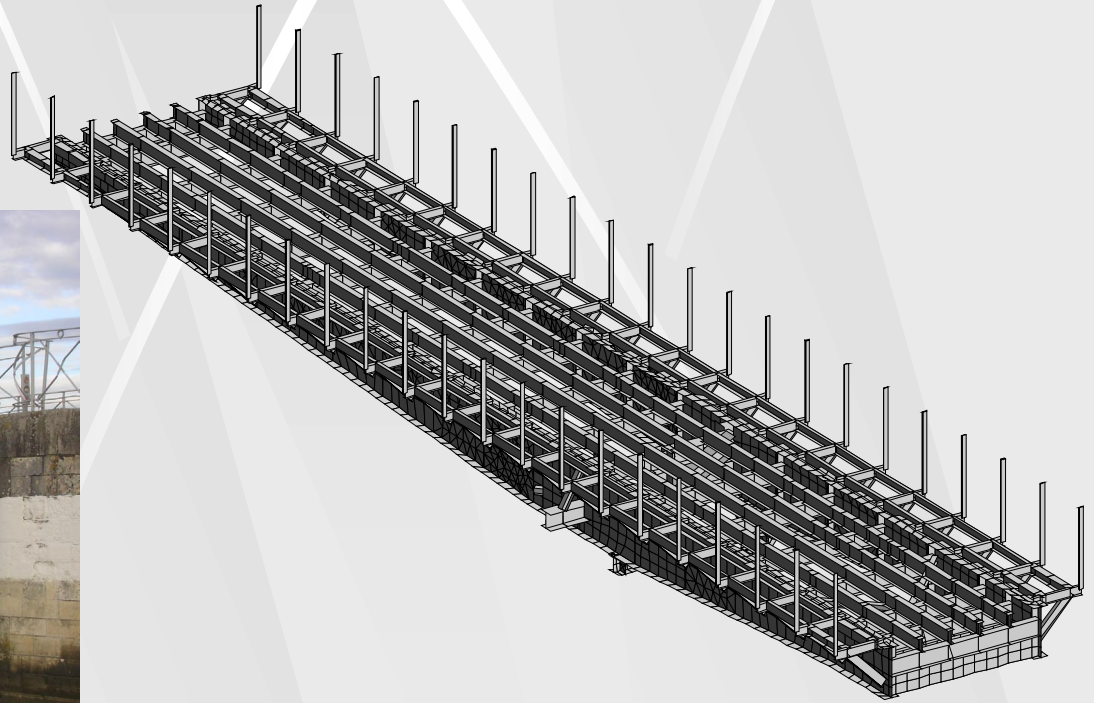
[conveyor_support]
113141





Moveable bridge

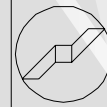
- Traffic, occupational, wind, snow loads
 - Old bridge -> new design with less steel



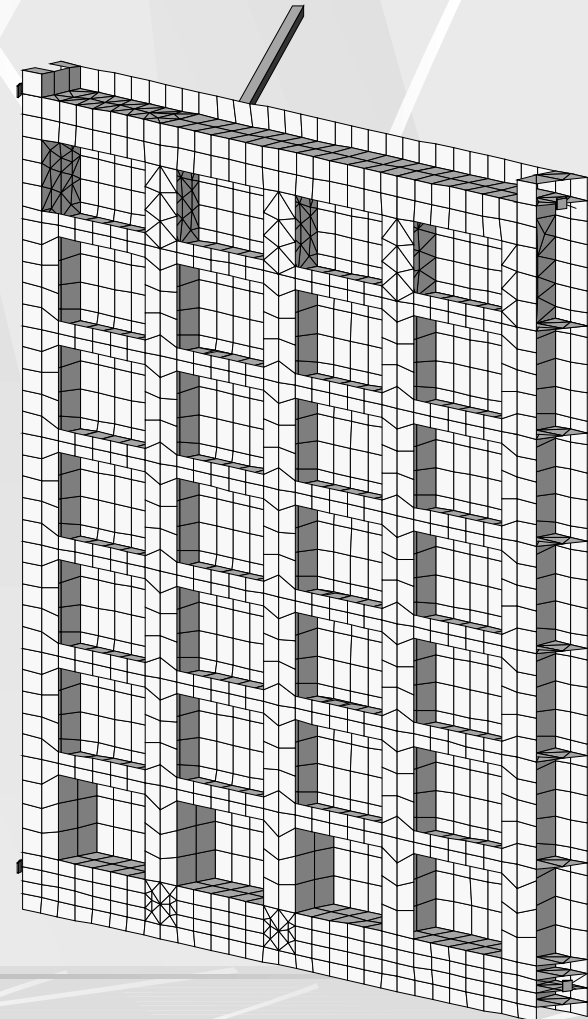
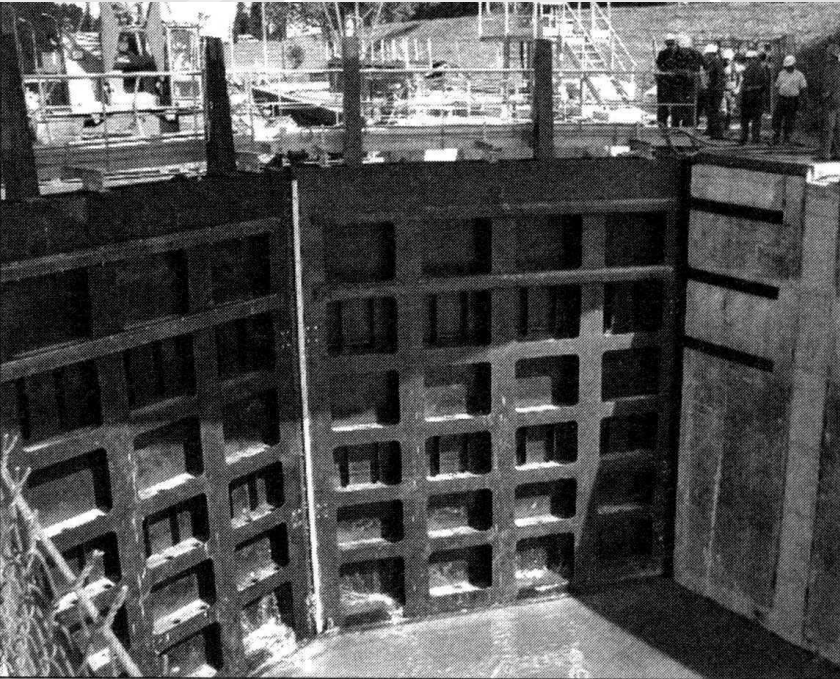


Canal Lock

● Hydraulic pressure



[vantai_oise]
1/50.4;

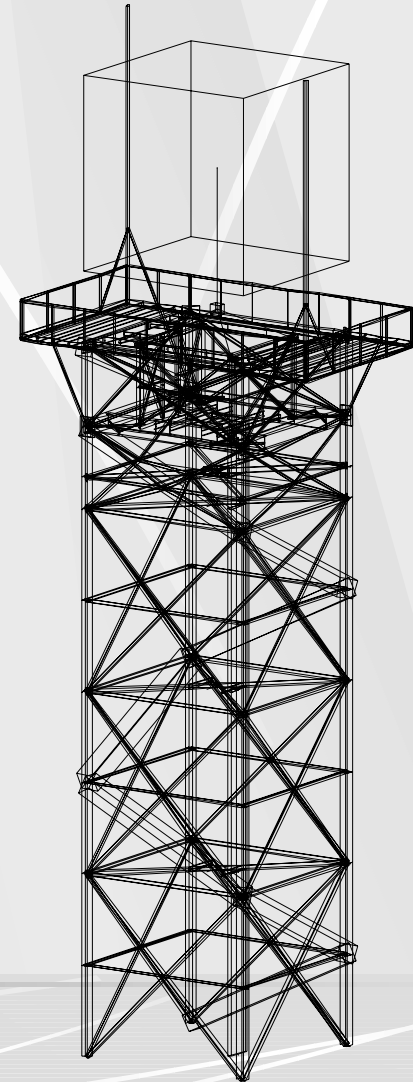
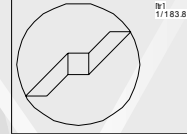




Radar towers

● From 5m to 30m

- Global localization,
- extreme wind, seism, temperature





tactical systems

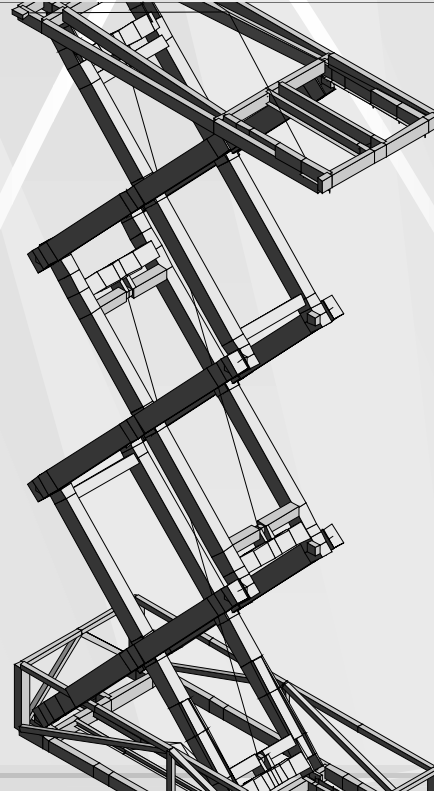
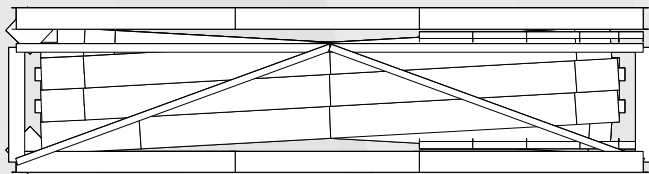


● Self-elevator radar system

- Air transportable in container
- Radar support and tower mounted without crane

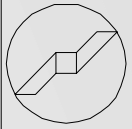


Illustration 01/02/10



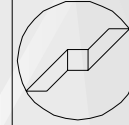


pylons



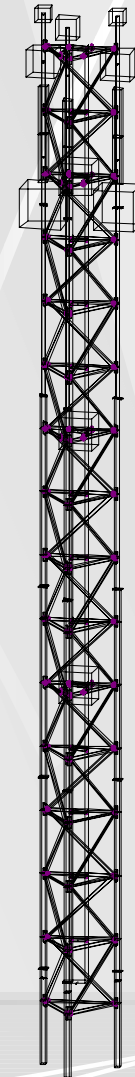
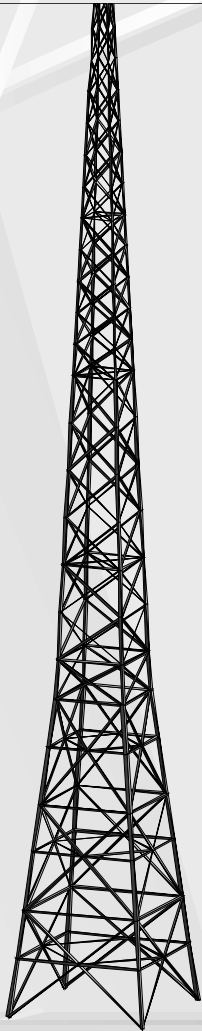
Evilone 4L1

1/4252



Evilone 30m2

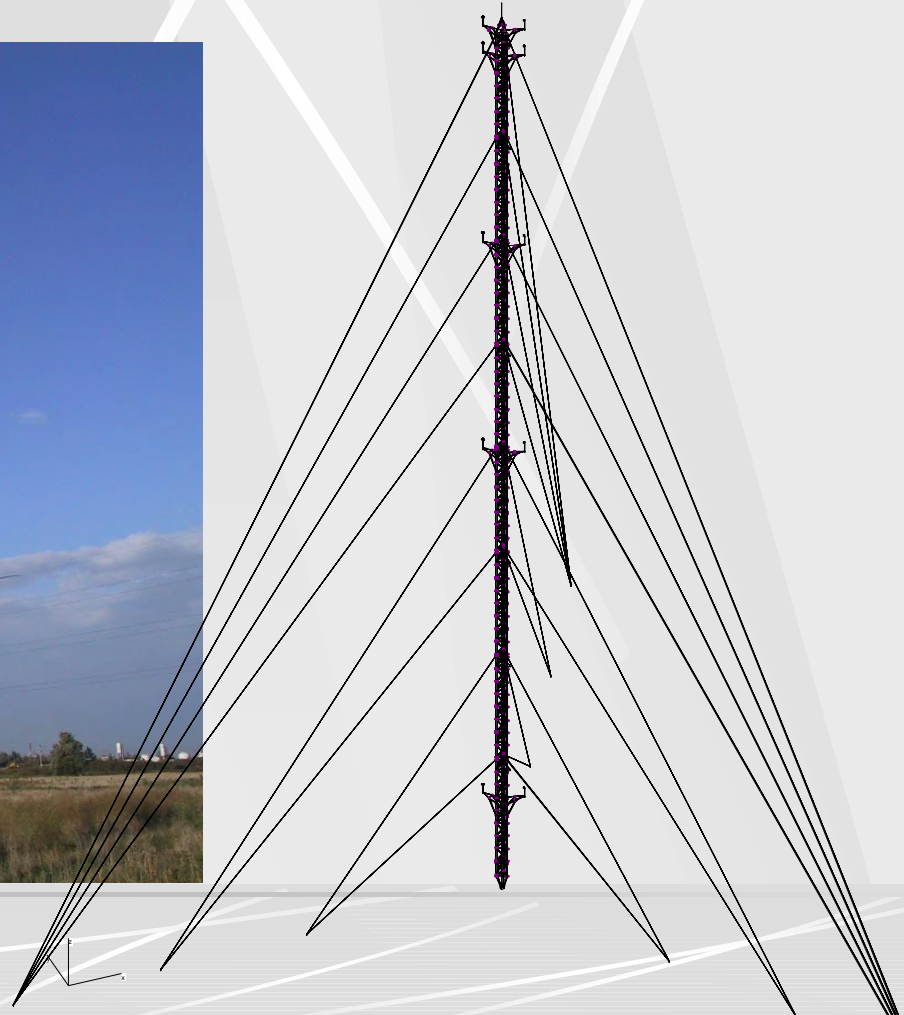
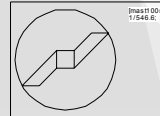
1/2102





Guyed poles

● up to 100m





Telescopic poles

● Up to 50m

